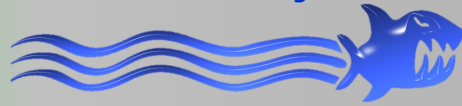
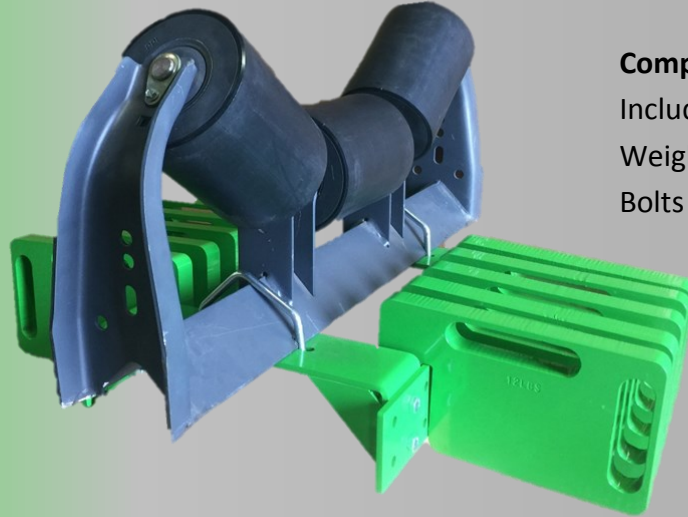


MCR Technologies Group, Inc.

Home of the *Weigh Shark*, not just another scale company!



Weigh Shark Calibration Kit & Weights



Complete Kits Part # - WSCK:
Includes One Bracket, Ten 12#
Weights, Two Tri-fold Mounting
Bolts

- ◆ Weights are easily accessible for the calibration process
- ◆ No longer required to climb on top of the belt to secure the weights on the opposite side of the belt
- ◆ Save time and be safe with Weigh Shark Calibration Kit and Weights
- ◆ All weights and bracket are powder coated for longer durability
- ◆ Designed for standard troughing, not applicable for Wing or CIT Idlers



Part # - WSCW: Weights can be purchased individually



Part # - WSCMB: One Bracket and Two Tri-Fold Mounting Bolts

MCR Technologies Group, Inc
P.O. Box 1016 Sterling, IL 61081
815.622.3181
www.weighshark.com
sales@weighshark.com

MCR Technologies Group, Inc is a North American Distributor
for the following German Companies



Digital Metal Detector



CONVEYOR
SAFETY SWITCHES



AGGREGATE
METAL DETECTORS

Analog Metal Detector